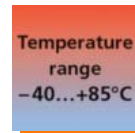
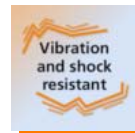


Touch sensor – start, stop and acknowledge



Capacitive touch sensors in compact cylindrical design

- Dynamic, static function, preset
- High IP 69K protection rating and wide temperature range -40...85 °C
- Symbols on the sensing face can be selected separately
- Easy installation into housing with Ø 22.5 mm bore thanks to M22 x 1.5 thread
- Wear-free and maintenance-free thanks to switching without any mechanical pressure



Functions and technology

Capacitive touch sensors can be used, for example, as start and stop function on machines, as enable switch and for opening and closing gates. Compared to mechanical switches the sensors operate without wear. Dynamic touch sensors detect an approaching human hand and suppress interference such as water, layers of ice or foreign bodies to a large extent. However, a gloved hand will still trigger them.

Static touch sensors detect hands and objects even through glass for as long as the sensing face is covered which provides, for example, protection against vandalism. With the latching operating principle it is possible to switch the sensor on by touching briefly and to switch it off again by touching briefly again. Furthermore, the housing is resistant to oils and it is also impact and scratch resistant. It offers the protection rating IP 69K. LEDs for optical feedback signal that the sensor has been activated. The green LEDs can be controlled separately and, for example, be used to indicate the status of plant and machinery.



Type	Evaluation principle	Connection	Housing material	Protection	Current rating [mA]	Order no.
Output function NO · DC PNP						
M22	dynamic	0.3 m PUR cable	PA	IP65, IP67, IP69K	500	KT5101
M22	dynamic	0.3 m PUR cable with M12 plug	PA	IP65, IP67, IP69K	500	KT5102
M22	dynamic	0.3 m PUR cable	Stainless steel	IP65, IP67, IP69K	500	KT5301
M22	static	0.3 m PUR cable	Stainless steel	IP65, IP67, IP69K	500	KT5305
M22	static	0.3 m PUR cable	PA	IP65, IP67, IP69K	500	KT5105
M22	static	0.3 m PUR cable with M12 plug	PA	IP65, IP67, IP69K	500	KT5106

Output function NO · DC PNP · green LED can be controlled separately						
M22	dynamic	0.3 m PUR cable	PA	IP65, IP67, IP69K	500	KT5109

Symbol disc must be ordered separately

Mounting options

The sensor can be installed in all housings with a \varnothing 22.5 mm hole. The supplied lock nut is used for fixing. Thanks to the M22 thread the sensor can be used for screw mounting without lock nut. Installation alignment of the sensor is not necessary since the clip showing the symbol for the sensing face is snapped in as the last step. Wiring is done via the tried-and-tested 3- or 4-wire technology.

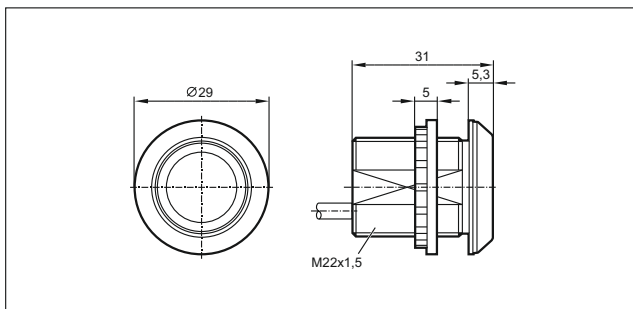
Common technical data		
Operating voltage	[V DC]	24 (12...30)
Current consumption	[mA]	45
Ambient temperature	[°C]	-40...85

Accessories





Description	Order no.
Symbol disc, lettering: START	E12377
Symbol disc, lettering: STOP	E12378
Symbol disc, symbol: on	E12379
Symbol disc, symbol: off	E12380
Symbol disc, transparent	E12386


Type	Description	Order no.

Dimensions



Connection technology

Type	Description	Order no.
	Socket, M12, 2 m black, PUR cable	EVC001
	Socket, M12, 5 m black, PUR cable	EVC002
	Socket, M12, 2 m black, PUR cable	EVC004
	Socket, M12, 5 m black, PUR cable	EVC005

Power supplies		
	Plastic housing, 24 V DC, 2.5 A	DN1031

ifm article no. 78000591 · We reserve the right to make technical alterations without prior notice. · 04.2014