

New absolute encoders



Cost-optimised absolute encoders – more functions and bus interfaces

- Single and multiturn encoders
- Easy wiring and programming
- Solid and hollow shafts
- Optional stainless steel version
- Profibus DPV1/2, ProfiNet and CANopen interface EtherNet/IP, DeviceNet or Modbus

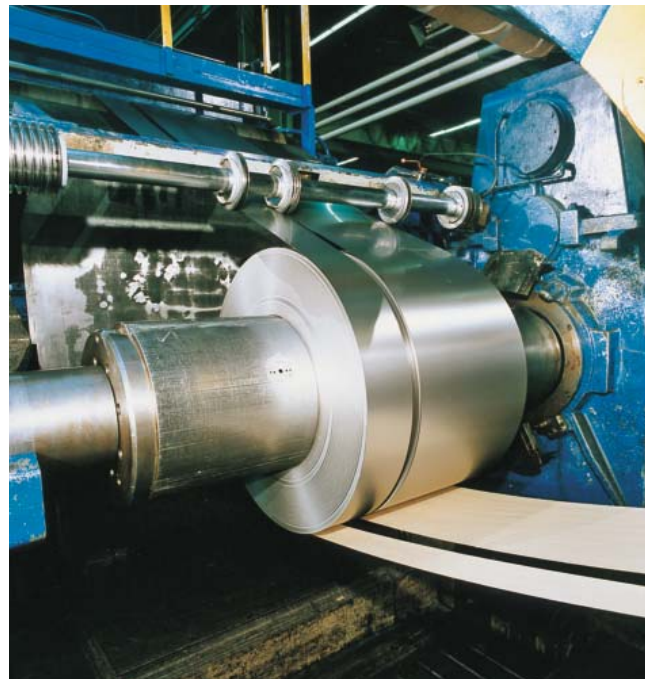


More functions at a favourable price

The new photoelectric absolute encoders with bus interface detect position, angle, speed and distance in automated plant and machinery. They complement the ifm product family and do not only offer extended functionality and additional interfaces but also a convincing price/performance ratio. They are also available in stainless steel versions.

Easy implementation






These single and multiturn encoders are available with solid or hollow shaft. The additional interfaces and the removable bus connection cap ensure easy wiring and programming. All common bus interfaces such as Profibus DPV1/2, ProfiNet and CANopen interface, EtherNet/IP, DeviceNet or Modbus are provided.



The multiturn encoder monitors the material feed of steel sheet rollers

Ø shaft [mm]	Resolution [Bit]	Interface	Operating voltage [V DC]	Protection class	Housing material	Connection	Order no.
Multiturn encoder · solid shaft							
6	25	Profibus	10...30	IP 65, IP 66, IP 67	Aluminium	Bus cap	RM3006
10	25	Profibus	10...30	IP 65, IP 66, IP 67	Aluminium	Bus cap	RM3007
10	25	ProfiNet	10...30	IP 65, IP 66, IP 67	Aluminium	Bus cap	RM3011
6	25	CANopen	10...30	IP 65, IP 66, IP 67	Aluminium	Bus cap	RM7011
10	25	CANopen	10...30	IP 65, IP 66, IP 67	Aluminium	Bus cap	RM7012
Singleturn encoder · solid shaft							
10	13	Profibus	10...30	IP 65, IP 66, IP 67	Aluminium	Bus cap	RN3001
6	13	CANopen	10...30	IP 65, IP 66, IP 67	Aluminium	Bus cap	RN7011
10	13	CANopen	10...30	IP 65, IP 66, IP 67	Aluminium	Bus cap	RN7012
Multiturn encoder · hollow shaft							
12	25	Profibus	10...30	IP 64, IP 65, IP 66, IP 67	Aluminium	Bus cap	RM3008



Accessories

Type	Description	Order no.
	Spring disc coupling, Ø 6 mm / 10 mm, die-cast zinc; PA	E60117
	Spring disc coupling, Ø 10 mm / 10 mm, die-cast zinc; PA	E60118
	Plastic beam coupling with stainless steel hub, Ø 10 mm / 10 mm	E60193
	Flexible coupling with clamp connection, Ø 6 mm / 10 mm, aluminium	E60066
	Flexible coupling with clamp connection, Ø 10 mm / 10 mm, aluminium	E60067
	Flexible coupling with adjusting screws, Ø 10 mm / 10 mm, aluminium	E60022
	Flexible coupling with adjusting screws, Ø 6 mm / 10 mm, aluminium	E60028
	Measuring wheel, Ø 159.15 mm / 10 mm, Hytrel TPE-E	E60110
	Measuring wheel, Ø 159.16 mm / 10 mm, aluminium, PU	E60076
	Measuring wheel, Ø 63.66 ± 0.1 mm / 10 mm, Hytrel TPE-E	E60138
	Measuring wheel, Ø 63.6 mm, 10 mm, aluminium	E60095
	Measuring wheel, Ø 63.66 ± 0.1 mm / 6 mm, aluminium	E60137
	Measuring wheel, Ø 63.6 mm / 6 mm, aluminium	E60006
	Angle bracket, aluminium, black anodised	E60035

Further technical data

Housing diameter	[mm]	58
Ambient temperature	[°C]	-40...85
Maximum mechanical rotational speed	[1/min]	12.000

Connection technology

Type	Description	Order no.
	EtherNet jumper, M12 plug / M12 plug 2 m, PVC cable	E21138
	EtherNet, screened patch cable, 2 m, PUR cable, M12 / RJ45	E12090